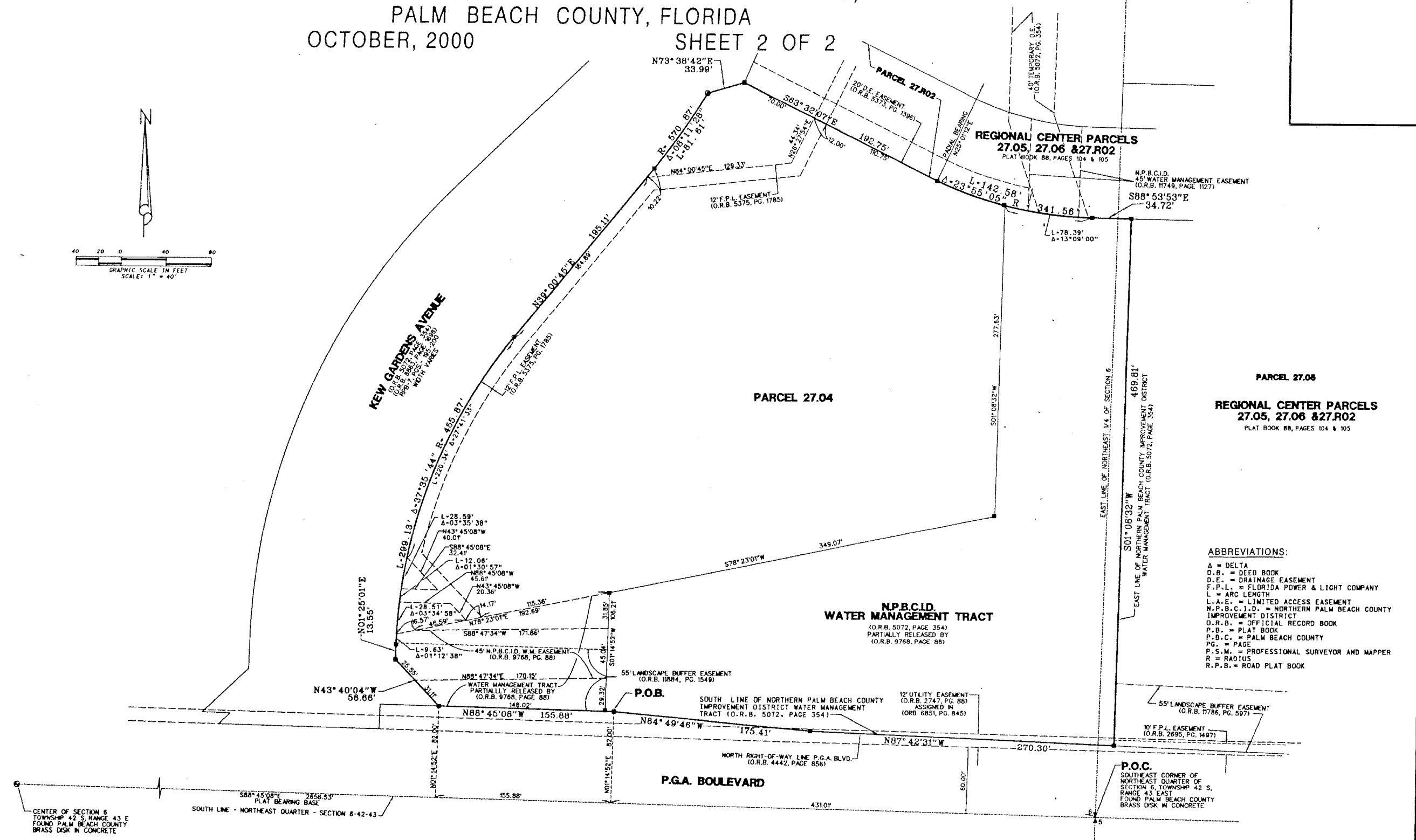
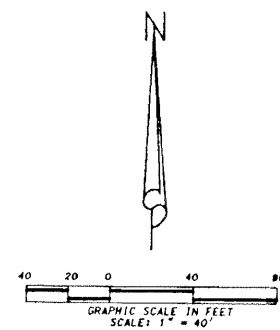


# REGIONAL CENTER PARCEL 27.04

SITUATE IN SECTIONS 5 AND 6, TOWNSHIP 42 SOUTH,  
RANGE 43 EAST, CITY OF PALM BEACH GARDENS,  
PALM BEACH COUNTY, FLORIDA

OCTOBER, 2000

SHEET 2 OF 2



**PARCEL 27.05**  
**REGIONAL CENTER PARCELS**  
**27.05, 27.06 & 27.R02**  
 PLAT BOOK 88, PAGES 104 & 105

**ABBREVIATIONS:**  
 Δ = DELTA  
 D.B. = DEED BOOK  
 D.E. = DRAINAGE EASEMENT  
 F.P.L. = FLORIDA POWER & LIGHT COMPANY  
 L = ARC LENGTH  
 L.A.E. = LIMITED ACCESS EASEMENT  
 N.P.B.C.I.D. = NORTHERN PALM BEACH COUNTY  
 IMPROVEMENT DISTRICT  
 O.R.B. = OFFICIAL RECORD BOOK  
 P.B. = PLAT BOOK  
 P.B.C. = PALM BEACH COUNTY  
 PG. = PAGE  
 P.S.M. = PROFESSIONAL SURVEYOR AND MAPPER  
 R = RADIUS  
 R.P.B. = ROAD PLAT BOOK

CENTER OF SECTION 6  
 TOWNSHIP 42 S, RANGE 43 E  
 FOUND PALM BEACH COUNTY  
 BRASS DISK IN CONCRETE

		CAD: K:\USTATION\06-42-43\0759306\0759306.DGN	
		REF.	
FLD. J.C.	FB. PG.	JOB 99-075(306)	
OFF. R.W.	316 13	DATE 08/16/99	
CKD. D.C.L.	SHEET 2 OF 2	DWG. D99-075P	

LB4431  
 675 West Indiantown Road, Suite 200,  
 Jupiter, Florida 33458 TEL: 561-746-8454